

H

U

M

A

N

S

S

I

N

C

E

1

9

8

2

About Humans since 1982

With a diverse and complex practice that transverses art, design and technology, Humans since 1982 defy easy categorisation. Their experimental sculptures and installations are driven by a shared curiosity and desire to make sense of the world, using technology as a mechanism to explore our motivations and anxieties. Based in Stockholm, Sweden, the growing interdisciplinary team comprises international specialists within technology design and curation who collaborate to take Humans since 1982's projects and exhibitions from concept to realisation.

About ClockClock 24

ClockClock 24 is both a kinetic sculpture and a functioning wall clock. It has been a signature piece of Humans since 1982 since it was first launched in 2015. The individual clock hands veer from unpredictable, mechanical spinning to perfect synchronization, illustrating a shifting choreography of disarray and structure. Once each minute, the clock hands align to tell the time as a digital clock.

Contact

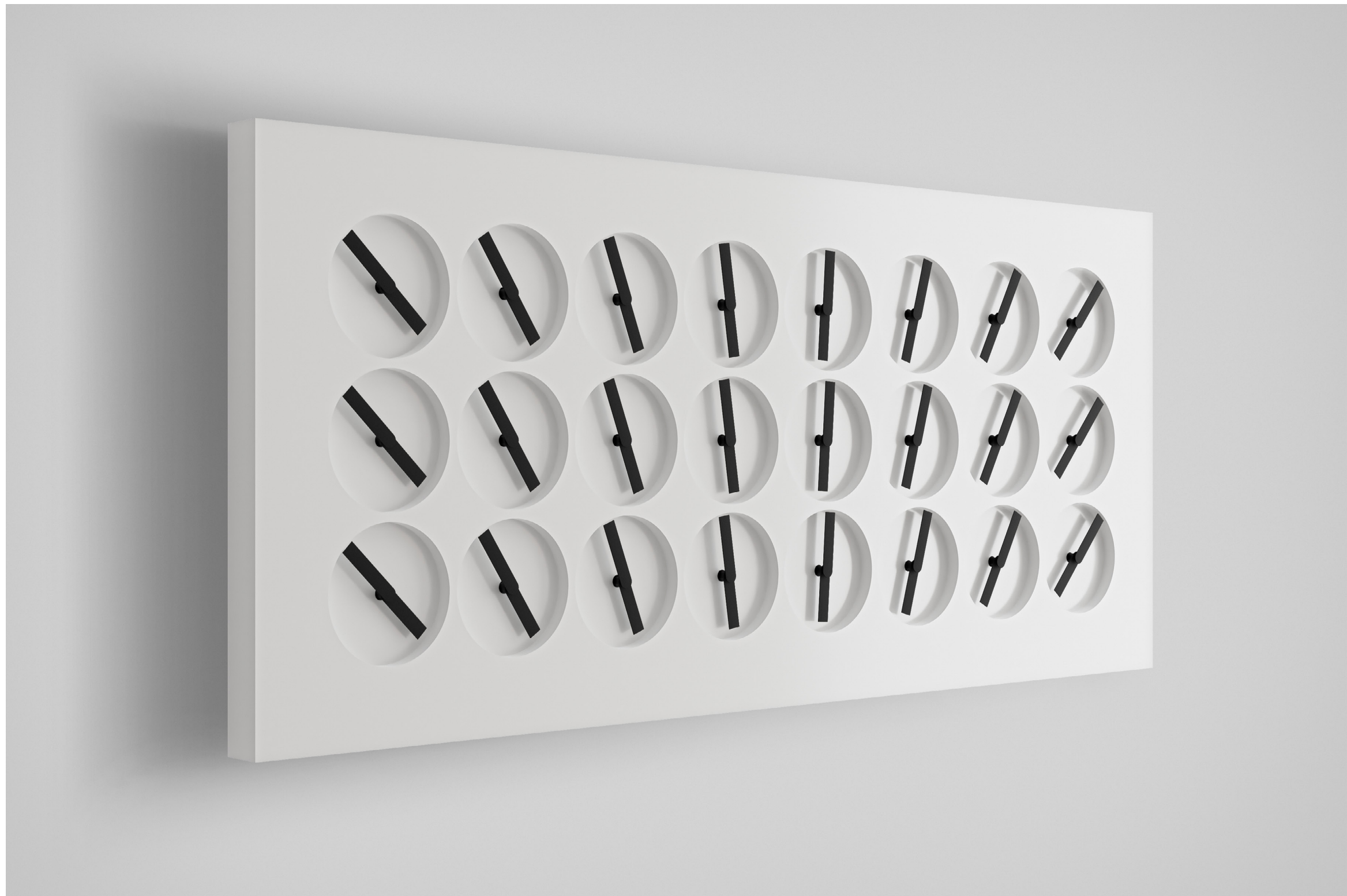
mail@clockclock.com

+46 73 893 84 10

www.clockclock.com

www.humanssince1982.com





ClockClock 24 – White

2015

Handcrafted white housing of mineral composite, electronic components,
black clock hands of injection moulded ABS.

Dimensions: 900 × 400 × 34 mm / 35,4" × 15,7" × 1,3"

Edition of 950

5,400 Euro (exclusive of shipping, any taxes and duties)

[Video](#)



ClockClock 24 – White

2015

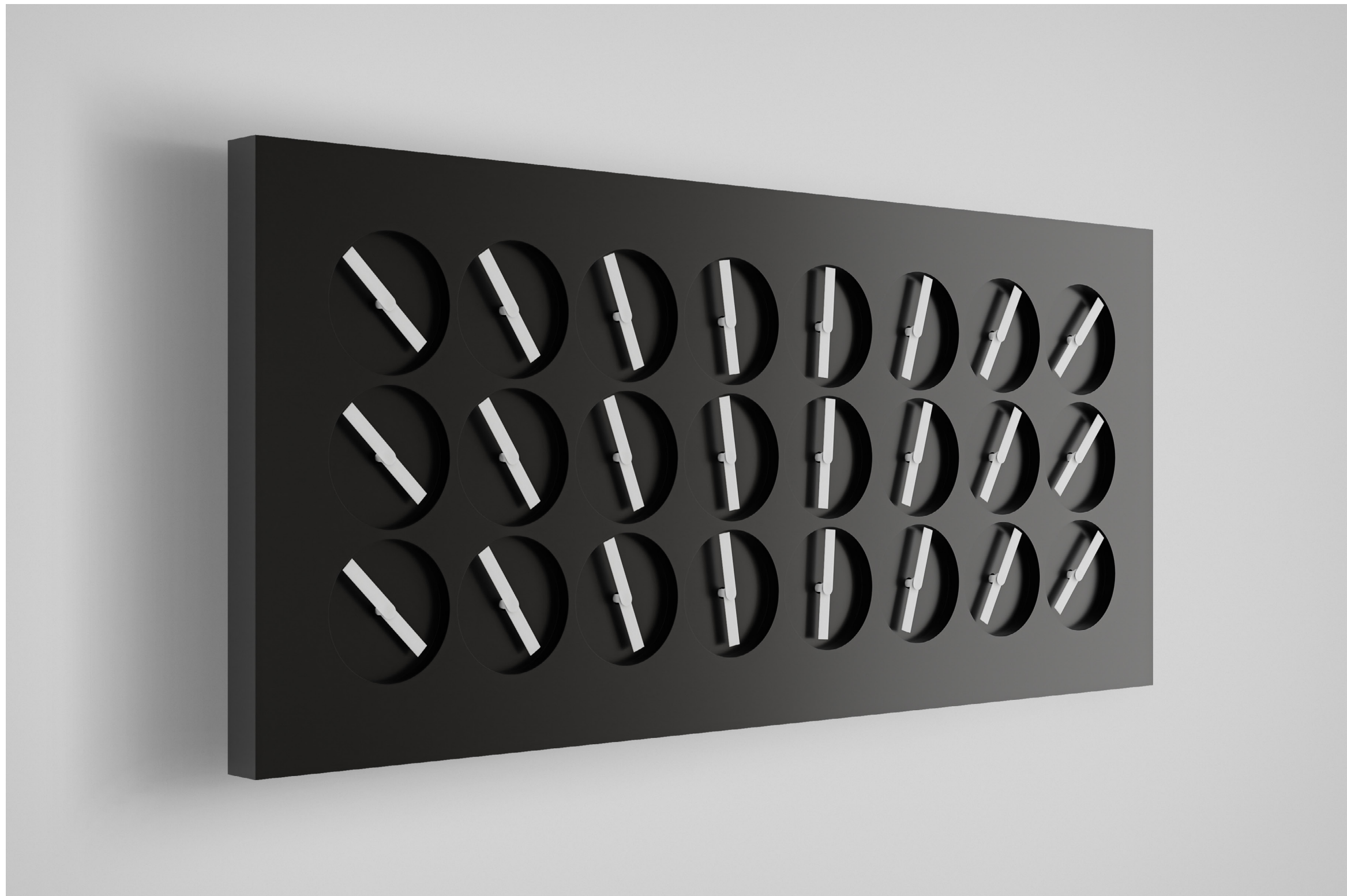
Handcrafted white housing of mineral composite, electronic components,
black clock hands of injection moulded ABS.

Dimensions: 900 × 400 × 34 mm / 35,4" × 15,7" × 1,3"

Edition of 950

5,400 Euro (exclusive of shipping, any taxes and duties)

[Video](#)



ClockClock 24 – Black

2015

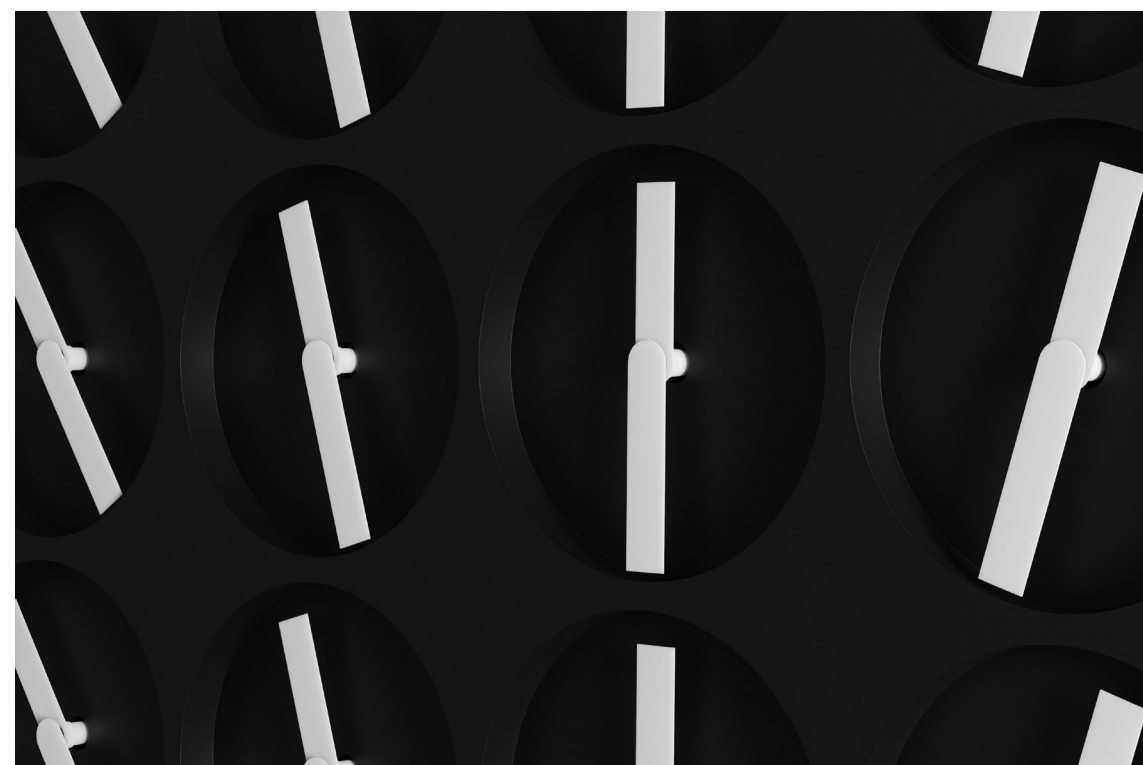
Handcrafted black housing of mineral composite, electronic components,
white clock hands of injection moulded ABS.

Dimensions: 900 × 400 × 34 mm / 35,4" × 15,7" × 1,3"

Edition of 950

6,300 Euro (exclusive of shipping, any taxes and duties)

[Video](#)



ClockClock 24 – Black

2015

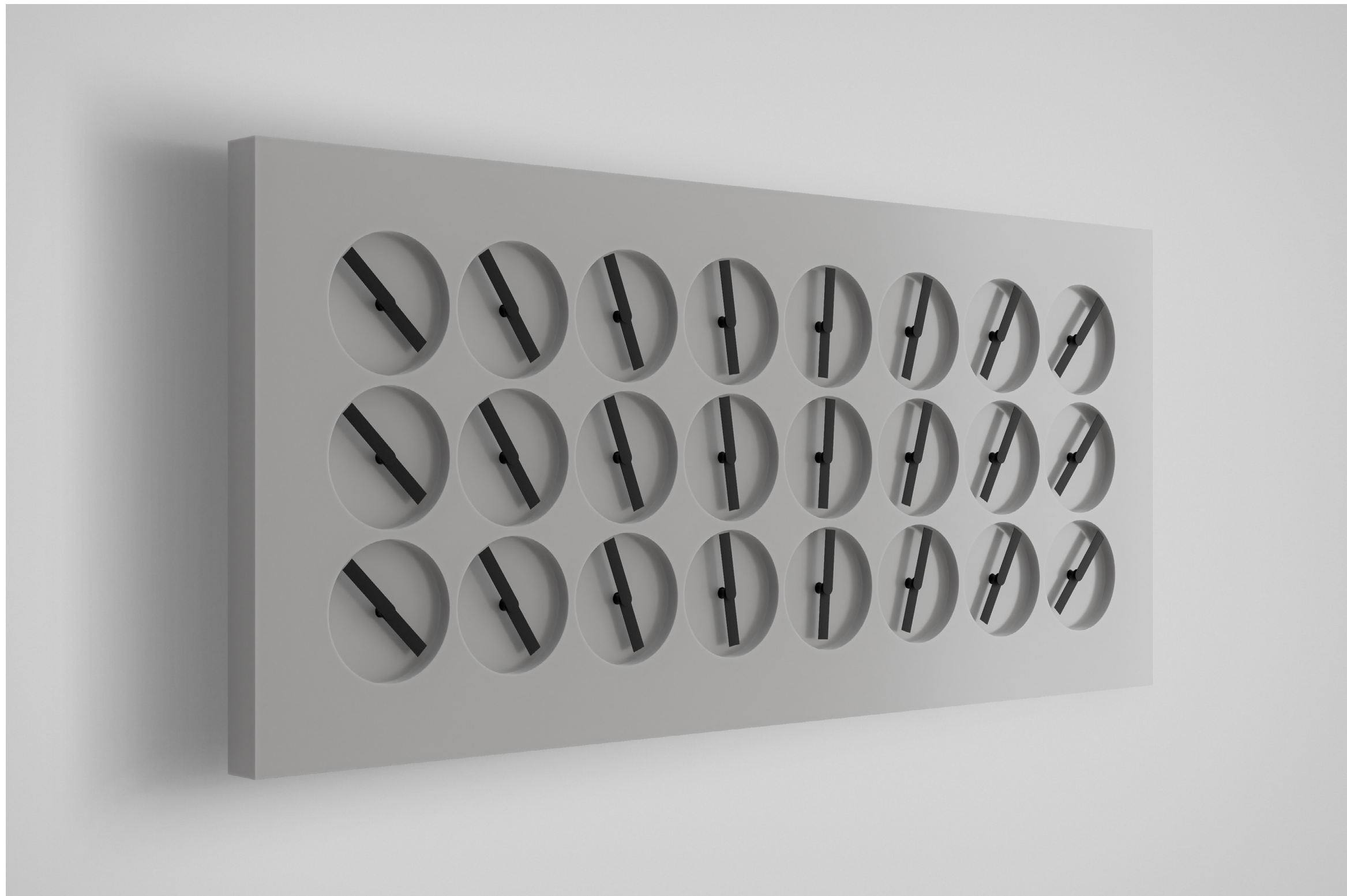
Handcrafted black housing of mineral composite, electronic components,
white clock hands of injection moulded ABS.

Dimensions: 900 × 400 × 34 mm / 35,4" × 15,7" × 1,3"

Edition of 950

6,300 Euro (exclusive of shipping, any taxes and duties)

[Video](#)



ClockClock 24 – Grey

2020

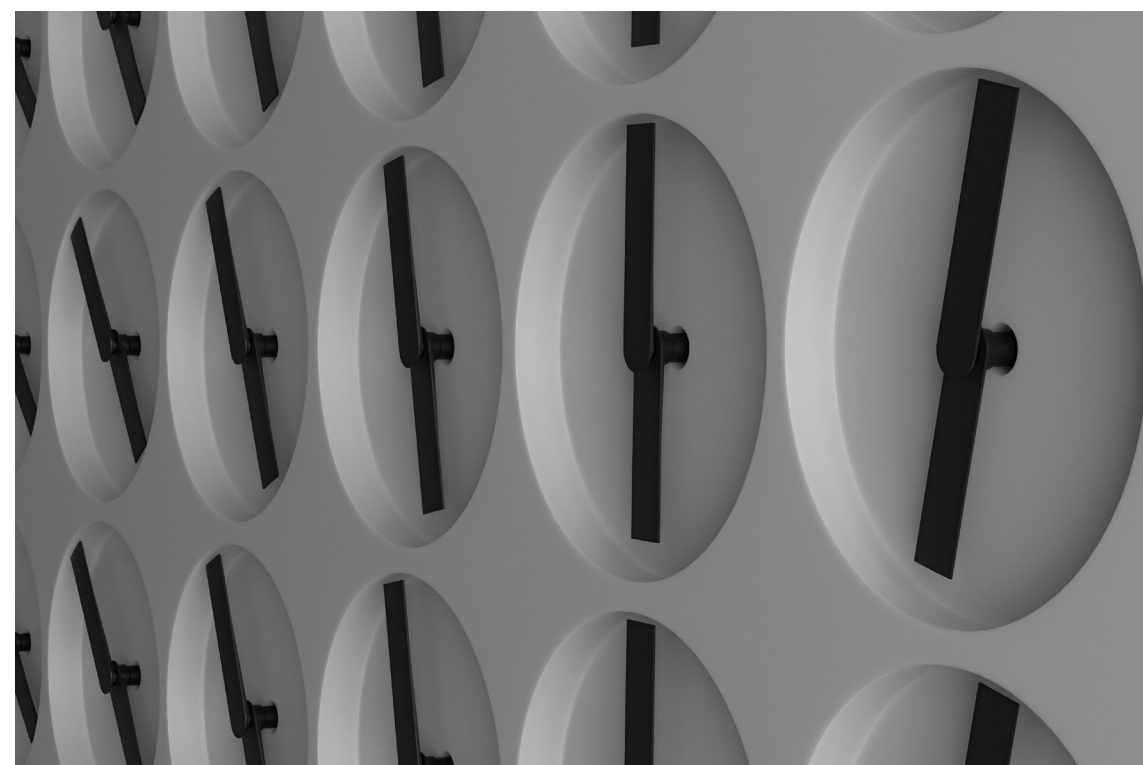
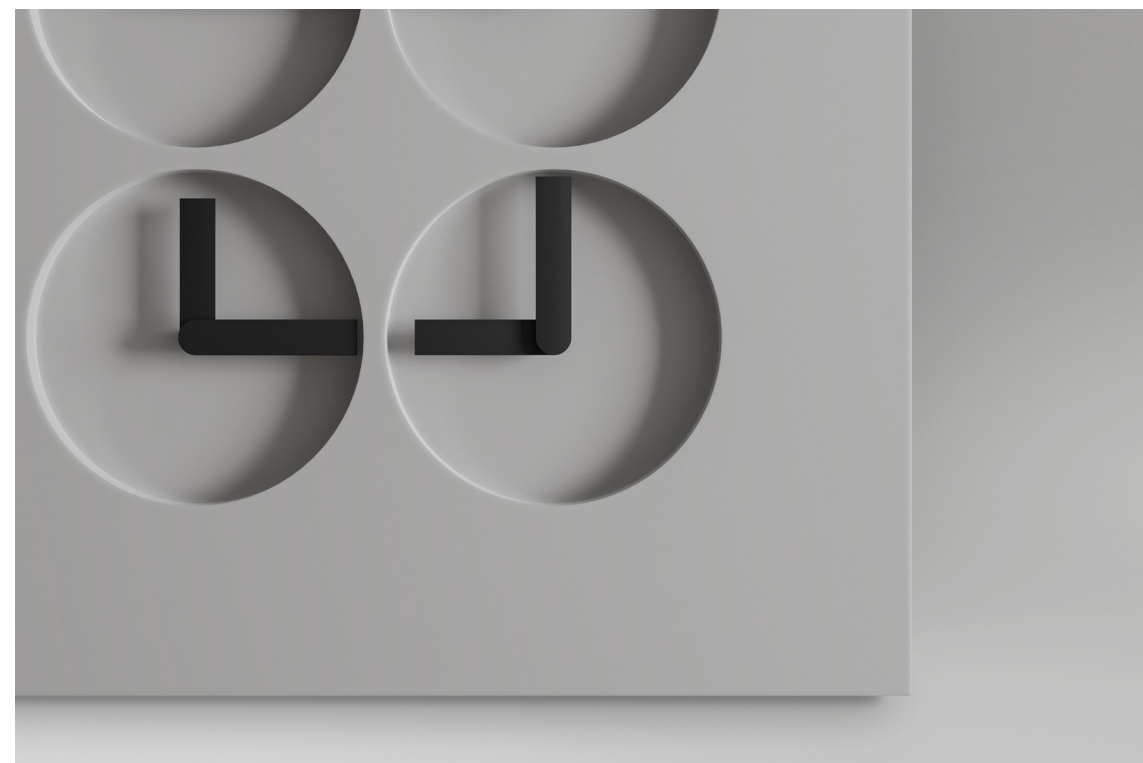
Handcrafted grey housing of mineral composite, electronic components,
black clock hands of injection moulded ABS.

Dimensions: 900 × 400 × 34 mm / 35,4" × 15,7" × 1,3"

Edition of 950

6,300 Euro (exclusive of shipping, any taxes and duties)

[Video](#)



ClockClock 24 – Grey

2020

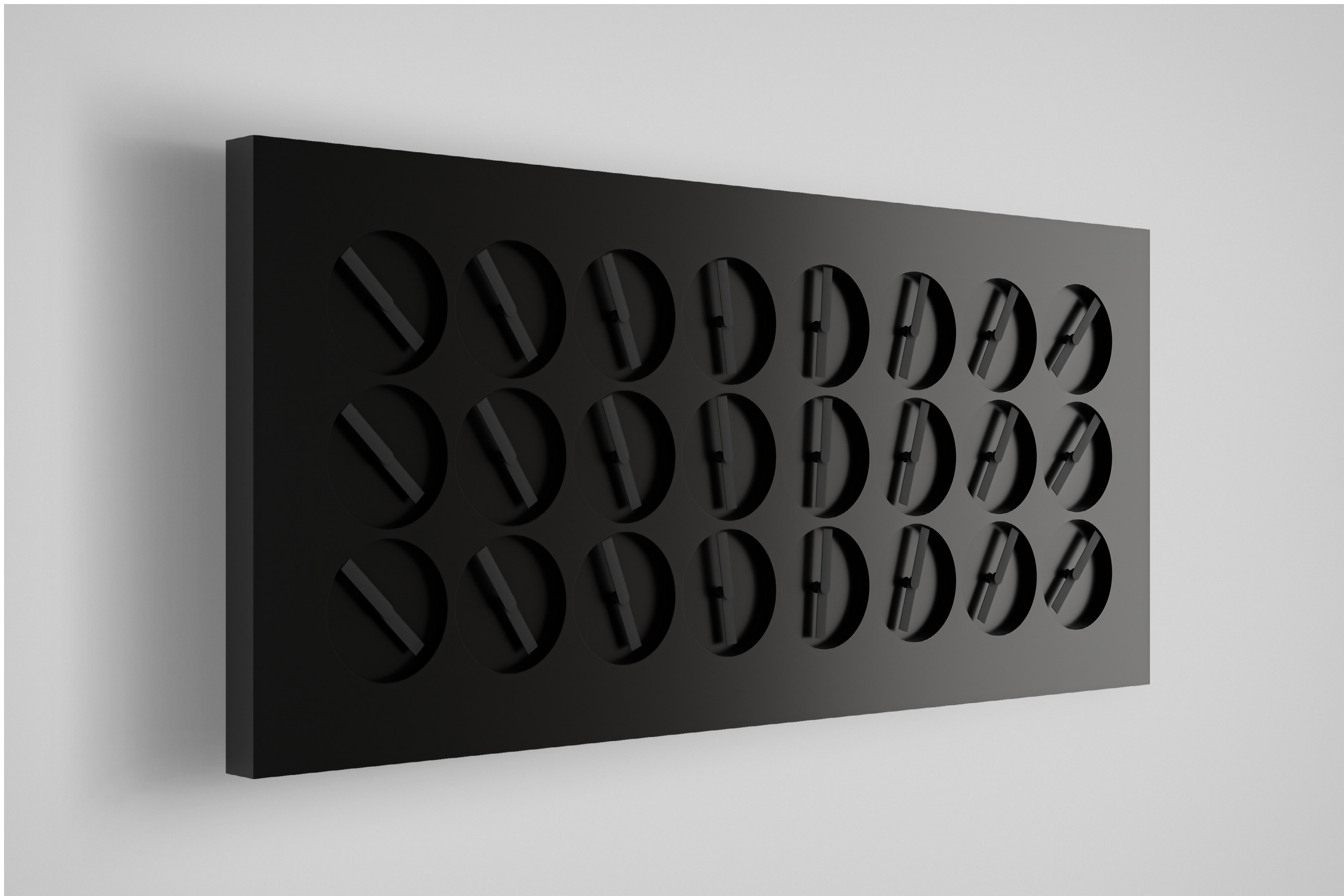
Handcrafted grey housing of mineral composite, electronic components,
black clock hands of injection moulded ABS.

Dimensions: 900 × 400 × 34 mm / 35,4" × 15,7" × 1,3"

Edition of 950

6,300 Euro (exclusive of shipping, any taxes and duties)

[Video](#)



ClockClock 24 – Noir

2020

Handcrafted black housing of mineral composite, electronic components,
black clock hands of injection moulded ABS.

Dimensions: 900 × 400 × 34 mm / 35,4" × 15,7" × 1,3"

Edition of 250

7,150 Euro (exclusive of shipping, any taxes and duties)

[Video](#)



ClockClock 24 – Noir

2020

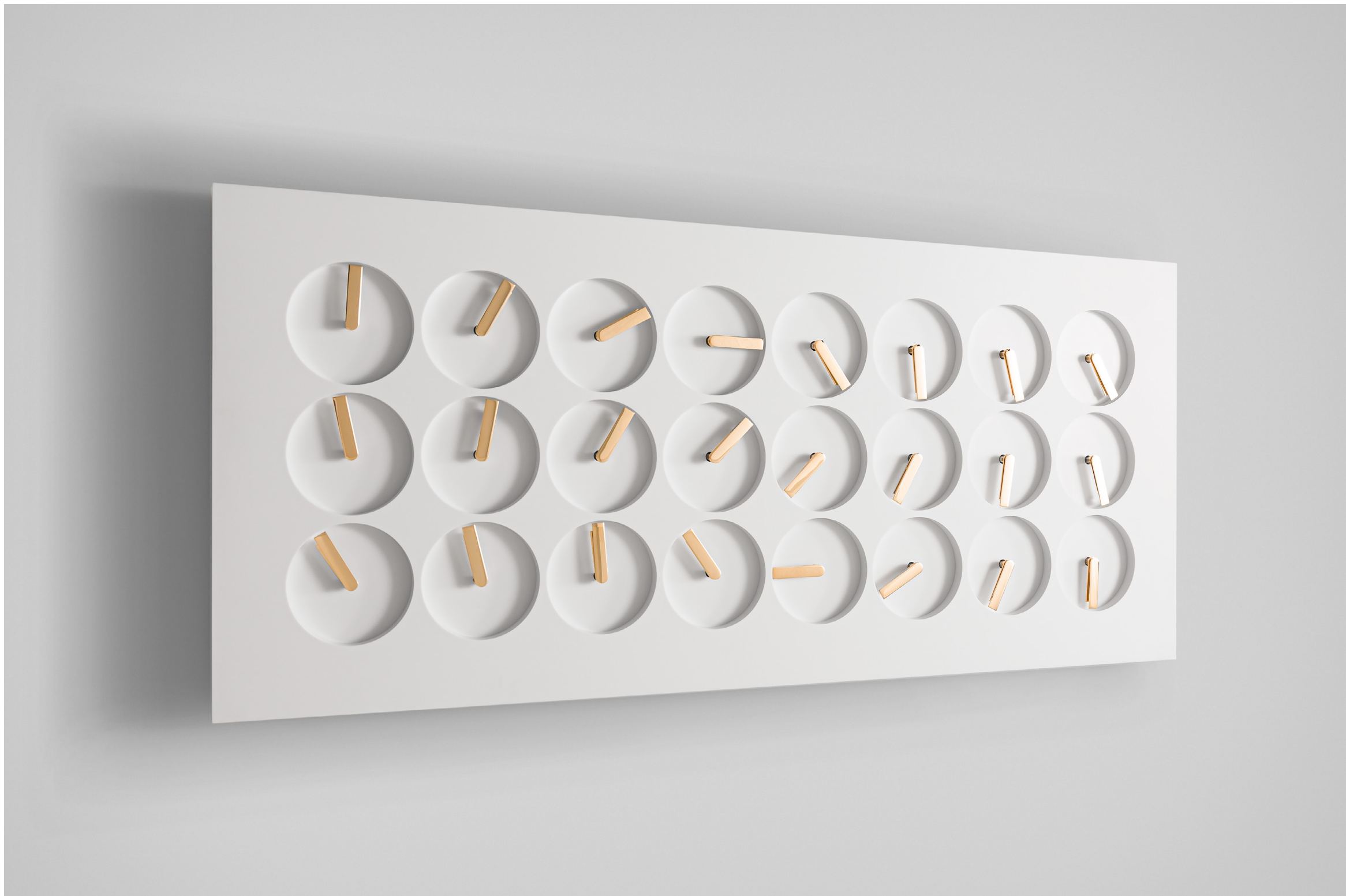
Handcrafted black housing of mineral composite, electronic components,
black clock hands of injection moulded ABS.

Dimensions: 900 × 400 × 34 mm / 35,4" × 15,7" × 1,3"

Edition of 250

7,150 Euro (exclusive of shipping, any taxes and duties)

[Video](#)



ClockClock 24 Golden Hands – White

2018

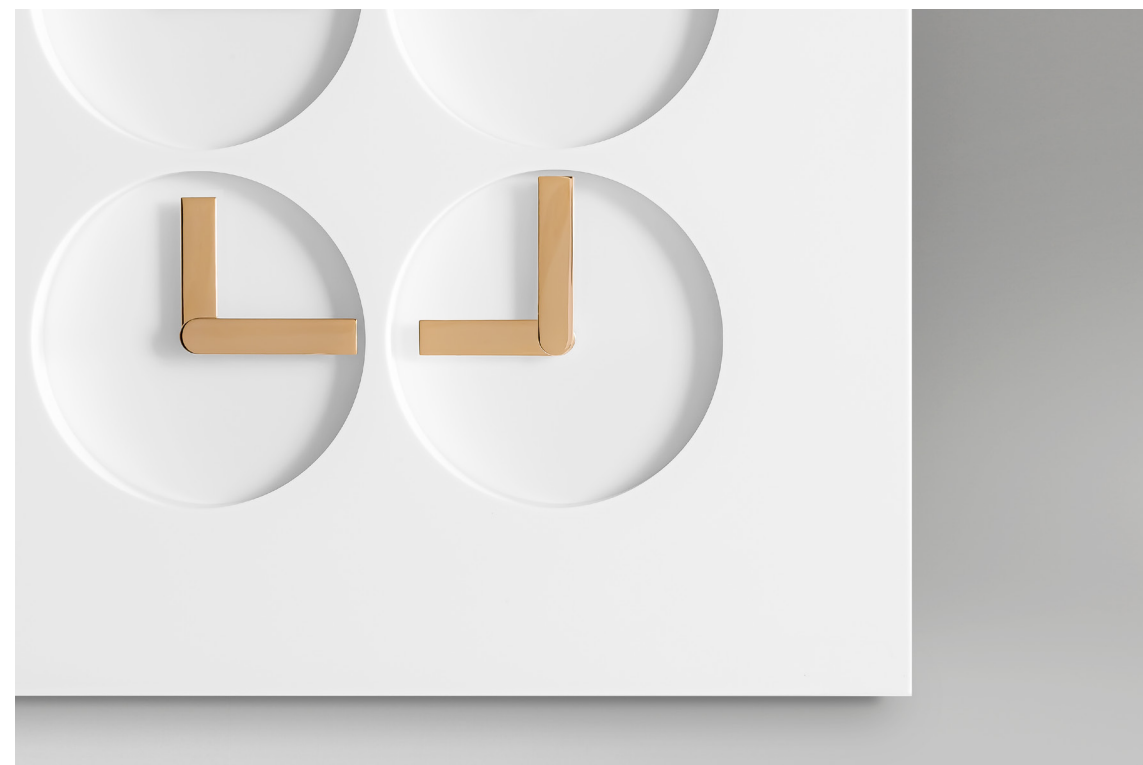
Handcrafted white housing of mineral composite, electronic components,
22 Karat gold-plated clock hands.

Dimensions: 900 × 400 × 34 mm / 35,4" × 15,7" × 1,3"

Edition of 250

8,700 Euro (exclusive of shipping, any taxes and duties)

[Video](#)



ClockClock 24 Golden Hands – White

2018

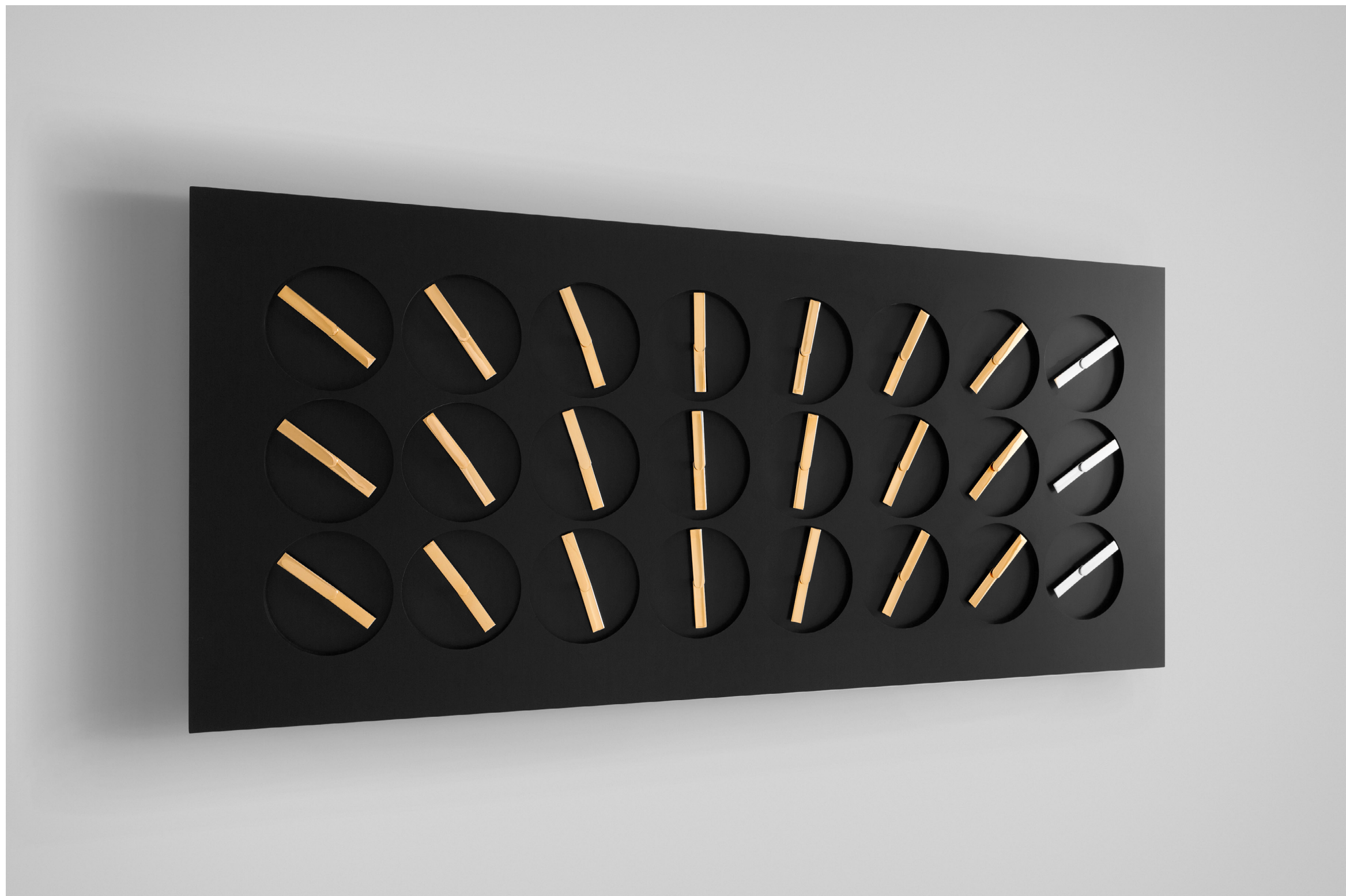
Handcrafted white housing of mineral composite, electronic components,
22 Karat gold-plated clock hands.

Dimensions: 900 × 400 × 34 mm / 35,4" × 15,7" × 1,3"

Edition of 250

8,700 Euro (exclusive of shipping, any taxes and duties)

[Video](#)



ClockClock 24 Golden Hands – Black

2018

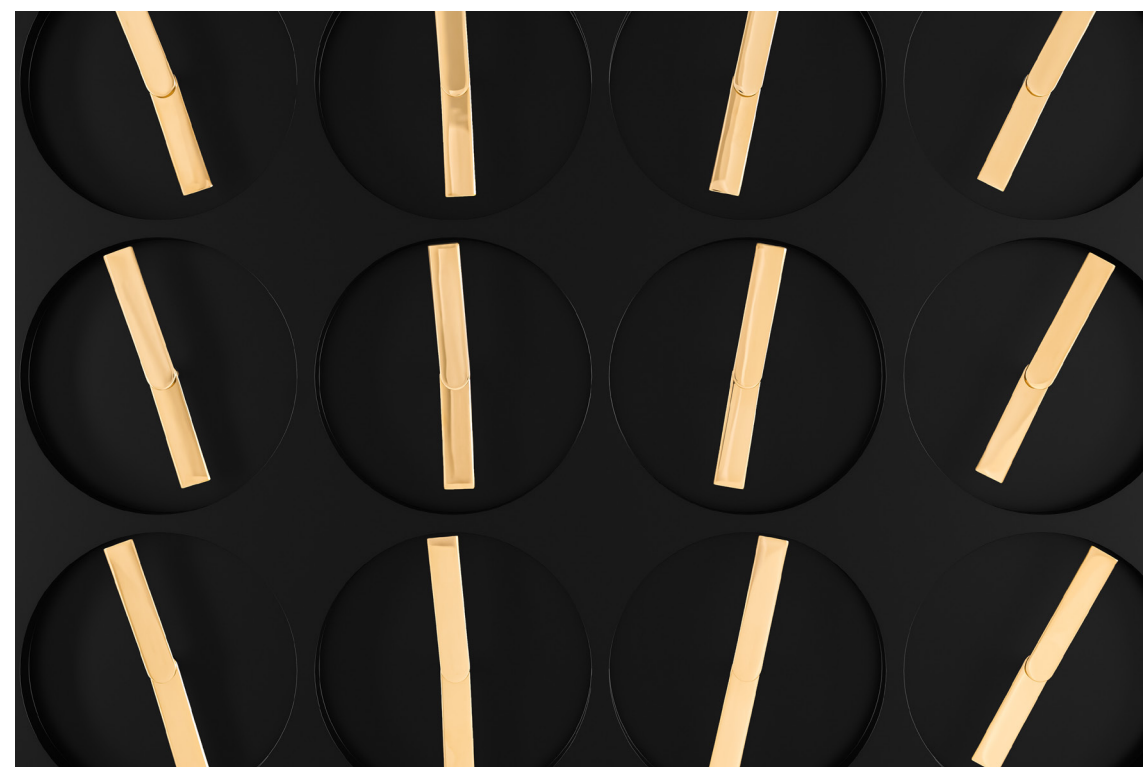
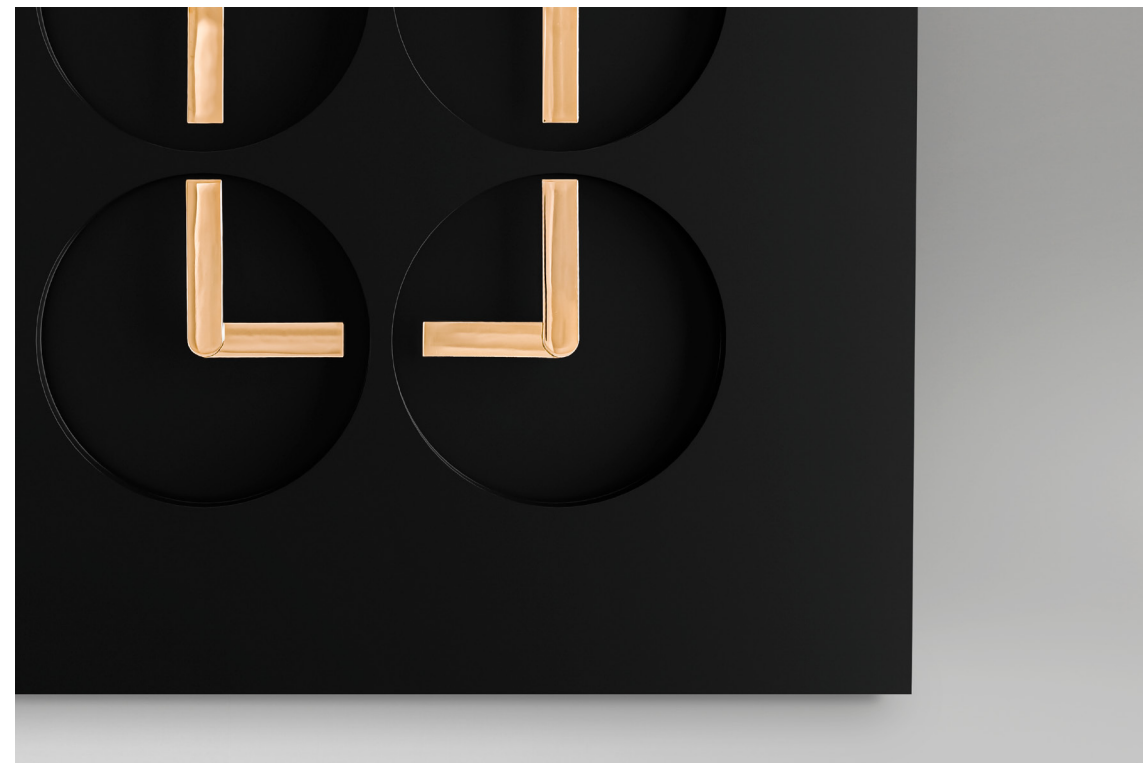
Handcrafted black housing of mineral composite, electronic components,
22 Karat gold-plated clock hands.

Dimensions: 900 × 400 × 34 mm / 35,4" × 15,7" × 1,3"

Edition of 250

9,550 Euro (exclusive of shipping, any taxes and duties)

[Video](#)



ClockClock 24 Golden Hands – Black

2018

Handcrafted black housing of mineral composite, electronic components,
22 Karat gold-plated clock hands.

Dimensions: 900 × 400 × 34 mm / 35,4" × 15,7" × 1,3"

Edition of 250

9,550 Euro (exclusive of shipping, any taxes and duties)

[Video](#)

Contact

mail@clockclock.com

+46 73 893 84 10

www.clockclock.com

www.humanssince1982.com